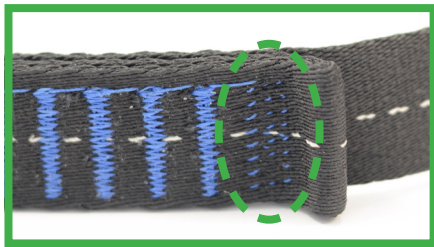




TBiQ DEVICES WEBBING WEAR

Webbing is a field replaceable part that must be regularly inspected. This document should only be used as a guideline and is not all inclusive. There may be circumstances not outlined in this document where webbing should be taken out of service. The operator or operator trained staff must carry out inspection and service actions as they are described in the User Manual. All personnel performing these actions must be trained in the correct procedures and deemed competent to do so. Do not attempt to carry out any maintenance, repair or service actions not detailed in the User Manual.

The following tables are relevant to all Head Rush devices using TBiQ Webbing:



The structural stitch pattern includes a sacrificial bumper stitch pattern which protects the structural bar tack stitches. See highlighted section for bumper stitches. These stitches are allowed to unravel over time due to impacts with the Nozzle. Trim any loose threads in this section. When this section is completely unraveled over time, the entire webbing assembly must be replaced.

WEAR TABLES

Webbing pictures outlined in **red** in the tables below show webbing that **MUST** be taken out of service and replaced immediately to continue using your TRUBLUE iQ device.

TRUBLUE iQ

Edge and Face Wear		Progress of Bumper Stitch Separation	
Edge Wear—Monitor		Monitor	
Edge Wear—Monitor		Monitor	
Face Wear—Replace		Monitor	
Edge Wear—Replace		Monitor	
Edge Wear—Replace		Replace	

Head Rush Technologies
1699 Cherry Street, Suite C, Louisville, CO 80027

MOLDY WEBBING

Any webbing showing signs of mold should be taken out of service.

UV EXPOSURE

Webbing used outdoors in direct sunlight for extended periods of time should be replaced more frequently. Monitor the color of the handgrip, if there is significant sunbleaching of the color, the webbing must be replaced. Recommend at least every 6 months replacement in high UV, high UV and sandy environments, or high wind environments can wear out webbing especially near the bartack.

TROUBLESHOOTING WEBBING WEAR

Symptoms	Potential Causes	Potential Solutions
BUMPER STITCH DEPLOYED	Unit mounted low	Mount the unit higher or develop routes that minimize the impact of the bumper stitch on the Nozzle at the finish of the climb.
	Normal use of the TRUBLUE iQ	The bumper stitch is designed to absorb impacts with the Nozzle. Over time, these impacts will bend the webbing and slowly pull out the stitches. Trim any loose threads. If the bumper stitch is completely unraveled, the webbing assembly must be replaced.
WEBBING FACE WEAR SIDE WEAR LOOP FAILURE & HAND GRIP WEAR	Webbing is rubbing on the wall (overhang or corner of wall)	Move the TRUBLUE iQ so the webbing does not rub on the wall/corner.
	Webbing is rubbing on a hold	Look for problem holds. Move the hold. Do not place large holds immediately below TRUBLUE iQ.
	Foreign objects, including dirt and/or dust have introduced damage to webbing assembly	Make sure to cover the TRUBLUE iQ when not in use. Wipe the webbing with a dry cloth daily, after use.
	Normal use of TRUBLUE iQ	Parts and webbing wear over time with normal operation, replace webbing as necessary.
BAR TACK DAMAGED	Climbers are rubbing the bartack on holds or the wall	Monitor routes with the TRUBLUE iQ to minimize contact with holds or wall features while climbing.
UV FADED WEBBING or HAND GRIP	Sun is damaging webbing	Remove TRUBLUE iQ at the end of day or cover unit and webbing after use. Allow webbing to retract into the device when not in use.
	Normal use of TRUBLUE iQ in outside applications	Webbing in outdoor installations is subjected to UV and other environmental factors. This webbing will wear out faster, or in cases of light use might not show typical wear patterns. Replace webbing more frequently in these environments.
HAND GRIP WEAR	Hand grip is rubbing against wall/holds	Look for problem holds. Move the hold.
	Normal use of TRUBLUE iQ	Parts and webbing wear over time with normal operation, replace webbing as necessary.
WEBBING IS MOLDY/ DISCOLORED	Webbing is not being dried after being used in wet conditions	Whenever using the TRUBLUE iQ in wet conditions, take the unit down at the end of the day, extend the webbing in a sanitary environment, and allow webbing to dry outside of the unit.